

Capture Images: iRIS-CAM Camera

HYDROLOGY | GROUNDWATER | FLOOD | WATER QUALITY | CLIMATIC

iRIS-CAM: Smart Image Capture

The iRIS-CAM camera accessory for the iRIS 3x0 (iRIS 320 / iRIS 350) datalogger has been designed and constructed using technology appropriate for use in harsh outdoor and industrial environments.

General Description

Power Supply

No internal power supply or battery is required. The iRIS-CAM is powered directly from the iRIS datalogger via the interconnecting cable.

Imaging

The fixed focus camera module is capable of capturing and processing full colour images in one of four different resolutions. These are stored in a compressed JPEG format for compatibility with a wide range of viewing applications.

iRIS Image Capture Modes

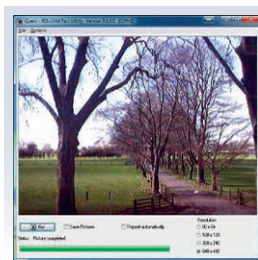
The iRIS 3x0 can capture images based on schedule, an external trigger attached to one of the digital inputs (e.g. a contact switch), or on trigger value(s) for any connected sensors.

Enclosure

The case is constructed from diecast aluminium alloy that is powder-coated. This gives a very high degree of mechanical strength and EMI shielding. Cable entry is through a small hole on the left side. The electronics are potted in epoxy resin for complete waterproofing. Four holes are provided for secure mounting.

Deployment

A PC-based utility is included for final setup of the camera before it is connected to the iRIS datalogger and deployed. The utility allows pictures to be taken and viewed directly from a laptop or PC.



Basic Specification

- **Size:** 63mm x 57mm x 30mm (2.48in x 2.24in x 1.18in) (WxHxD) excluding lens.
- **Mass:** 351 g (12.34oz) including 5m (16.4ft) shielded cable.
- **Power Supply:** 3.3V d.c +/- 10% (powered from logger via cable).



- **Resolution:** Selectable 80x60, 160x120, 320x240 or 640x480 pixels, 24 bit colour, JPEG format.
- **Standard Lens:**
 - F2.8
 - Focal length 4mm
 - Angle of view 57°
 - Integral infra-red (IR) filter
- **Environmental:**
 - Operating:** -10 °C to +70 °C (14 °F to +158 °F).
 - Storage:** -10 °C to +85 °C (14 °F to +185 °F).
 - Enclosure:** sealed to IP67. However, to avoid defocus due to water droplets on the lens, installation within a windowed enclosure is recommended.

Contact Us

General Enquiries (Australia)

Phone: +61 2 9601 2022

Email: sales@hyquestolutions.com.au

Web: www.hyquestolutions.com.au

General Enquiries (New Zealand)

Phone: +64 (0) 7 857 0810

Email: sales@hyquestolutions.co.nz

Web: www.hyquestolutions.co.nz