

## Z-BOAT 1800MX

### Remote Habitat Mapping Survey Boat

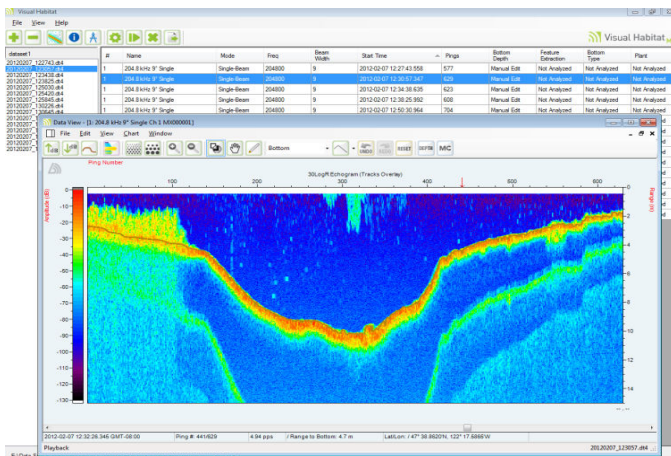
Oceanscience Z-Boat equipped with MX echosounder  
 Long-range Hydrolink-N radio system for real time data  
 Navigation display for precise survey line following  
 Internal GPS or external GNSS receiver options

- Safely and conveniently access shallow tidal and hard-to-access survey areas
- Collect bathymetry, submerged vegetation, and substrate data and expand the coverage of field campaigns
- View high-resolution echogram and oscilloscope data on the shore laptop in real time



### Performance Features

- Precision echosounder, calibrated and highly accurate
- Complete with software for data acquisition, processing and visualization
- Easy to operate with no special training





## MX Echosounder Specifications

### General

Transmit Power:	105 Watts RMS
Input power	12-18 VDC or 85-264 VAC
Draw	5 watts
Fuse	1 Amp AC; 1.5 Amp DC
Transmit Source Level	213 dB re 1 uPa
Pulse Length	0.4 ms
Ping Rate	5 Hz
Range Resolution	1.7 cm
Accuracy	1.7cm +/- 0.2 % of depth
Operating Depth Range	0.5- 100 m
DGPS positional accuracy	< 3m, 95 % typical
DGPS velocity accuracy	0.1 kts rms
DGPS update rate	1 sec

## Includes Data Analysis Software



**Visual Habitat** - A complete analysis package that provides processing for:

- SAV – Map canopy height and, % cover
- Bathymetry – Produce highly accurate maps and depth charts
- Substrate classification – Delineate areas of rock, sand, mud
- Export results as CSV or KML files

Quickly generate maps showing transect lines with bathymetry, bottom type, and

Visualize your results like never before  
Generate maps in seconds  
View synchronized echogram and map views



## Z-BOAT 1800 Specifications

### Physical

Hull Length	180 cm
Hull Width	90 cm
Weight	30 kg
Payload	20 kg
Hull material	UV resistant ABS
Motor – Standard	Single brushed DC
Motor – High Speed	Dual Brushless 24V DC

### Remote

Nav RC Unit	Hitec with vessel telemetry
Frequency	2.4 GHz FHSS
Remote Range	1500 m
Data Telemetry Range	>1000 m

### Performance

Typical Survey Speed	3-4 kts (1.5-2.0 m/s)
Top Speed	Standard: 4 kts (2 m/s) High Speed: 10 kts (5 m/s)
Battery Endurance	Standard: Up to 150 min High Speed: Up to 240 min.
Battery Pack	Standard: 1 x 12V 30 Ah High Speed: 3 x 24V 10 Ah

